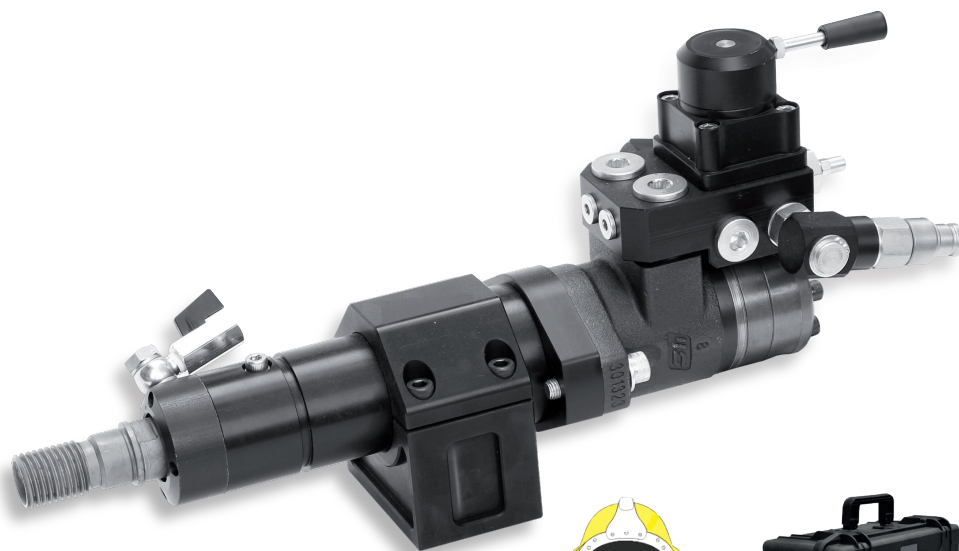


CORE DRILL

AK 50

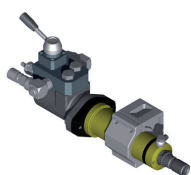
Hydraulic core drill for holes up to \varnothing 700 mm



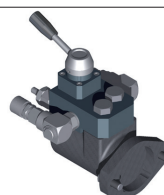
Available in
underwater version



AK50 is an hydraulic core drilling tool for heavy duty drilling works for holes with diameter up to 70 cm. The tool is manufactured with the best components and materials to ensure high performance and maximum reliability. To have more speed and drilling capacity on the tool, you can install six different hydraulic motors, orbital type, which means high efficiency, zero maintenance and a long and trouble-free service life. The 20 cc motor for small diameters is gear type.



The list price of complete tool includes: the tool body one motor/valve group to be chosen by customer depending on holes diameter. Other valve motor units available at more price.



Detail of the motor/valve group is available in 6 variants of displacement and number of revolutions.

TECHNICAL CHARACTERISTICS	AK 50
Weight (kg)	13
Dimension LxH (cm)	54x22
Attachment of core bit	1-1/4" (internal 1/2" BSP)
Flow L/min	30-38
Pressure Bar	120-200
Motor power	9KW (@38L/min 140 Bar)
Speed min/max	90-1750 rpm
Attachment of core bit	External 1-1 / 4 "BSP Male Internal 1/2 "BSP Female

MOTOR TYPE cubic centimetres	AK 50 speed/diameter chart - hydraulic motors range	
	speed @ 30 l/min hole \varnothing mm	speed @ 38 l/min hole \varnothing mm
20 cc - code k0283	1400 rpm- \varnothing 40-100 hole	1750 rpm- \varnothing 30-60 hole
50 cc - code k0116	600 rpm- \varnothing 70-120 hole	760 rpm- \varnothing 50-100hole
100 cc - code k0114	300 rpm- \varnothing 130-250 hole	380 rpm- \varnothing 130-180 hole
160 cc - code k0112	180 rpm- \varnothing 300-360 hole	220 rpm- \varnothing 250-310 hole
200 cc - code k0118	150 rpm- \varnothing 400-600 hole	190 rpm- \varnothing 250-400 hole
315 cc - code k0119	90 rpm- \varnothing 500-700 hole	120 rpm- \varnothing 450-600 hole

The drill rig is not supplied with the tool

