

PIPE MAINTENANCE

AH 15

Hydraulic motor for driving pipe drilling/hot tapping equipment

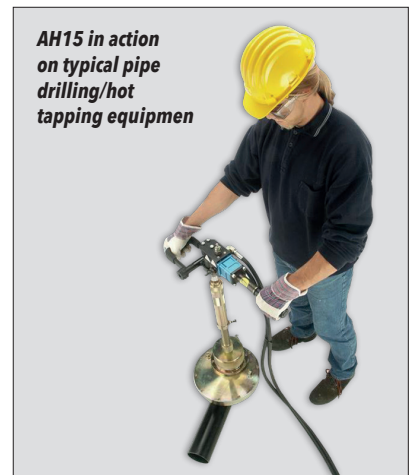
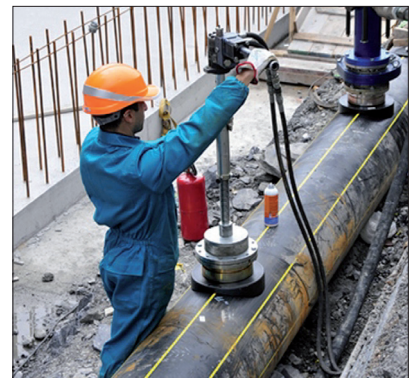
The tool performs in just 4 minutes and without effort the operation that manually performed requires at least 20



AH15 is a tool designed for the rotation in the two senses of pipe drilling machines for hot tapping connections operations normally necessary in the maintenance of gas and water networks. For its exclusive characteristics **AH15** can be used also for the rotation of other rotary devices like: gates irrigation canals, lifting/lowering of rail road devices, rotation of reducers, ecc. The tool features a “twist type” control handle to turn clock wise and counter clock wise, ON/OFF control is proportional so can increase or reduce speed in both rotations modes, the torque force and the rotation speed can be adjusted by acting on the two valve that control these functions. The handle with spring return assures total safety, the rotation immediately stops when the operator releases the handle (“dead man” action) **AH15 eliminates the fatigue and increases the productivity.**



AH15 used in operating opening/closing the gates of irrigation canals



AH15 in action on typical pipe drilling/hot tapping equipment



TECHNICAL CHARACTERISTICS	AH 15
Weight (kg)	5,5
Dimension LxH (cm)	18x56
Square drive size	12 mm - 1/2"
Pressure	140 Bar
Rotation speed	10-150 rpm adjustable
Torque force	55 Nm adjustable
Rotation	CW - CCW